

# Essential Evidence Plus Product Manual

Updated 09 December 2009

Installing Essential Evidence Plus on a Palm OS Handheld	2
Installing Essential Evidence Plus on a Pocket PC Handheld	5
Installing Essential Evidence Plus on a Palm OS Handheld (without Updater)	9
Installing Essential Evidence Plus on a Pocket PC Handheld (without Updater)	10
Installing Essential Evidence Plus on a Palm OS Handheld (Manual Method)	12
Installing Essential Evidence Plus on a Palm OS Handheld (Mac OS X)	14
Registering Essential Evidence Plus	16
Searching & Browsing: Overview	17
Searching & Browsing: Web	19
Searching & Browsing: Palm OS and Pocket PC	20
Searching & Browsing: Databases Searched	25

# Installing Essential Evidence Plus for Palm OS

## 1. Download the Essential Evidence Plus Setup file

See [Getting Started: Downloading Essential Evidence Plus](#)

## 2. Make sure Palm Desktop is up to date

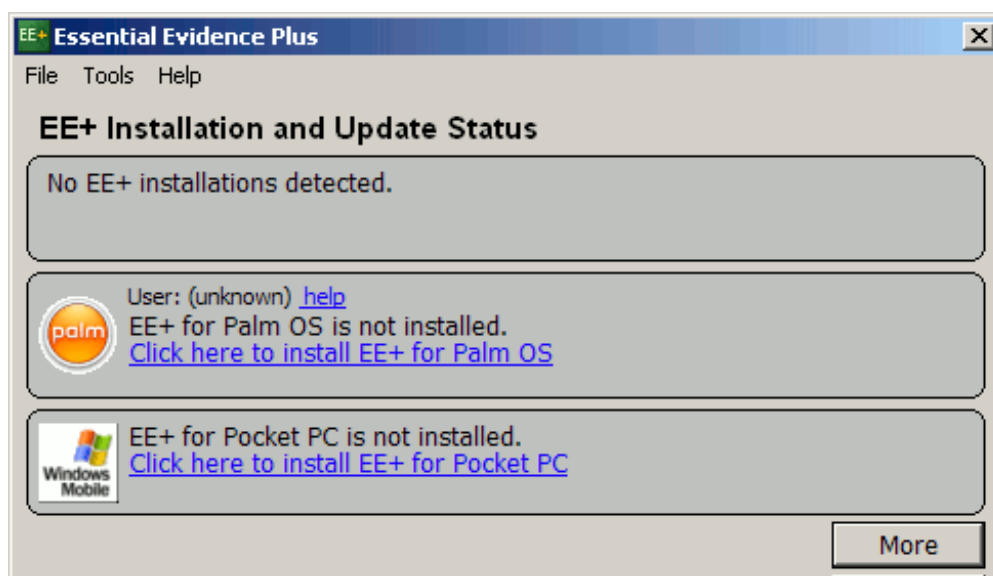
Many common installation problems are due to problems in older version of the Palm Desktop software. Please ensure that you have installed the latest version of Palm Desktop. Refer to your device vendor for assistance.

## 3. Connect your device to your PC

Make sure that your Palm OS device is properly connected to your PC and that you can successfully perform a HotSync operation. Ensure that your expansion memory is fully inserted into the device (unless you are installing to a device with special expansion memory built in).

## 4. Run the Essential Evidence Plus Setup

Locate the installation file that you downloaded and double-click it to launch the installer, and follow the instructions. When the installation has completed, the Essential Evidence Plus status window will appear.



## 5. Install Essential Evidence Plus to your Palm OS device

In the EE+ status window, select **Tools -> (Re)-install EE+ on Palm OS**. After a quick download, an installation process will launch for the Essential Evidence Plus for Palm OS setup. Follow the instructions carefully, and if prompted, select the Palm Desktop user for whom you are installing Essential Evidence Plus.

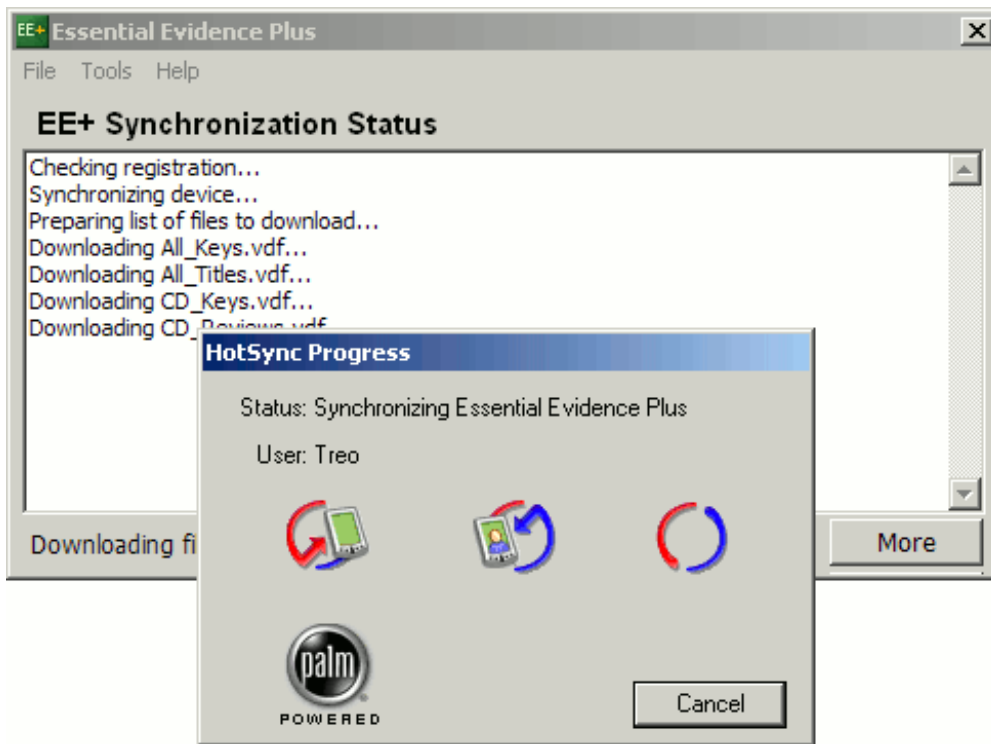
## 6. Perform a HotSync

After the Essential Evidence Plus Setup has completed, perform a HotSync operation. This first of two required HotSync operations will install the Essential Evidence Plus program to your device.

## 7. Perform a Second HotSync

This second HotSync operation will download and install the Essential Evidence Plus resource and data files to your device. It may take much longer than a normal HotSync operation.

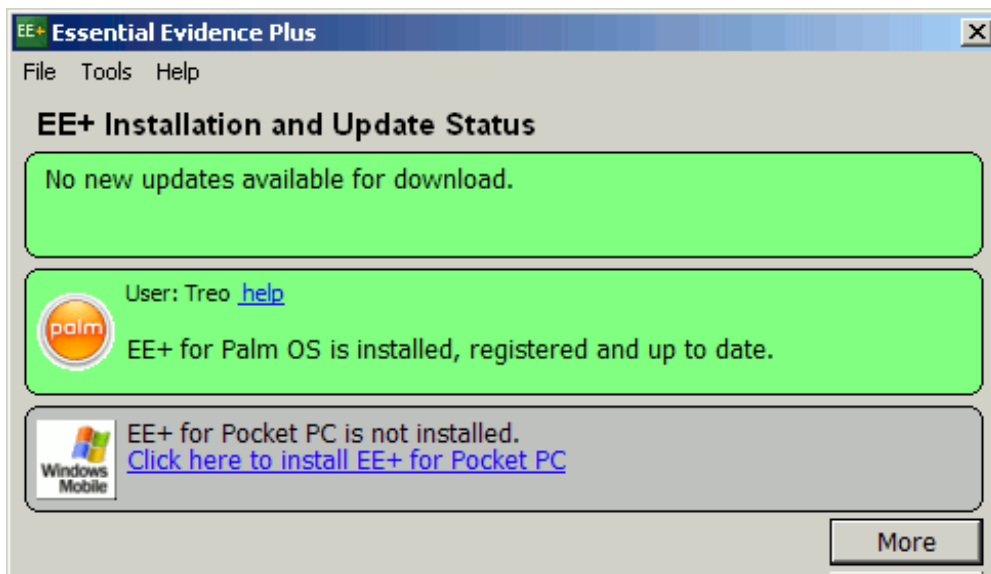
---



If you experience errors during the HotSync operation, or if the Essential Evidence Plus program does not appear to function properly, an additional HotSync operation may be required.

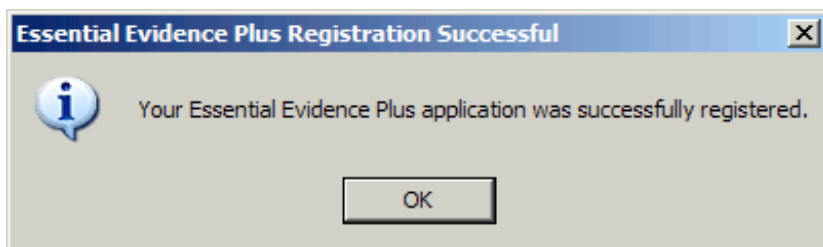
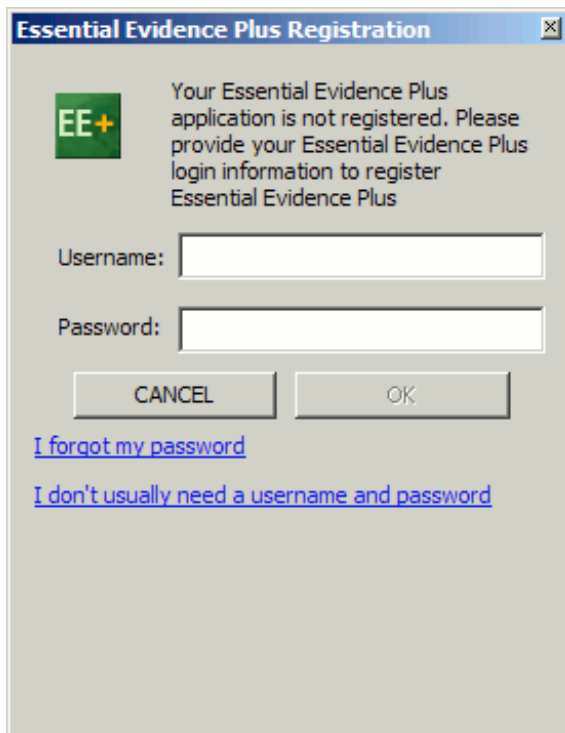
### Installation Complete

When the installation has completed, the Essential Evidence Plus status screen will show that EE+ for Palm OS is installed and up to date.



### Essential Evidence Plus Registration

During one of the initial HotSync operations, the Updater software should attempt to automatically register the Essential Evidence Plus program. You may be required to provide the username and password for your subscription to complete the registration process.



If the Updater fails to automatically register Essential Evidence Plus, the program will stop functioning after 30 days unless a registration code is provided. Be sure to [register your copy of Essential Evidence Plus](#) so that the program will function for the full duration of your subscription.

# Installing Essential Evidence Plus for Pocket PC

## 1. Uninstall previous versions of Essential Evidence Plus

Due to the limited storage space on handheld devices and the relatively large size of the Essential Evidence Plus program, it is recommended that you uninstall any previous versions of Essential Evidence Plus to ensure that there is sufficient space on the device for the installation process.

## 2. Download the Essential Evidence Plus Setup file

See [Getting Started: Downloading Essential Evidence Plus](#)

## 3. Make sure ActiveSync is up to date

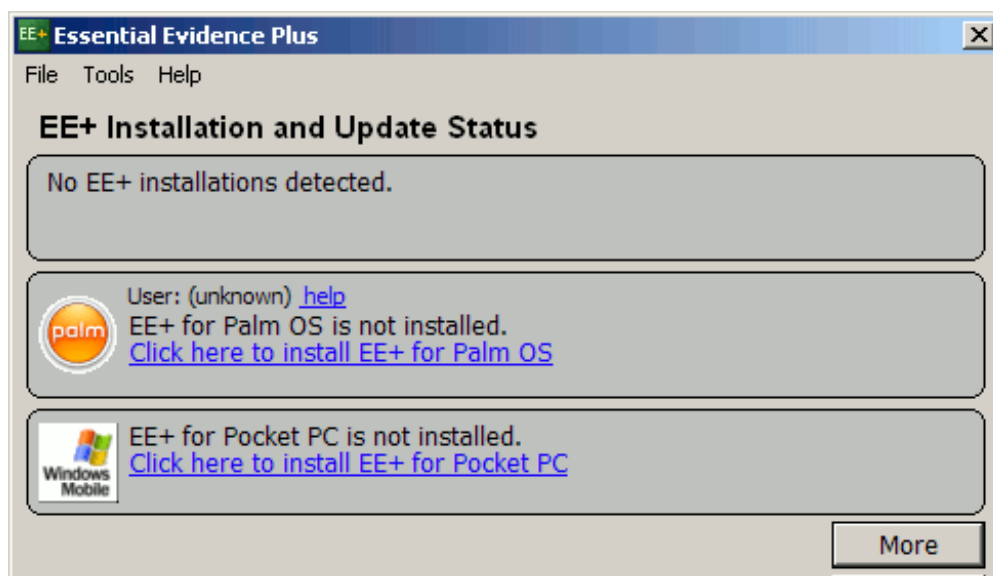
Many installation problems can be solved by ensuring that you have the latest version of Microsoft ActiveSync installed on your desktop computer. ActiveSync can be found [on the Microsoft web site](#).

## 4. Connect your device to your PC

Make sure your Pocket PC device is in its cradle and that a connection to your desktop computer has been established with ActiveSync. If you will be installing Essential Evidence Plus to an external memory card, make sure the card is fully inserted into your device.

## 5. Run the Essential Evidence Plus Setup

Locate the installation file that you downloaded and double-click it to launch the installer, and follow the instructions. When the installation has completed, the Essential Evidence Plus status window will appear.



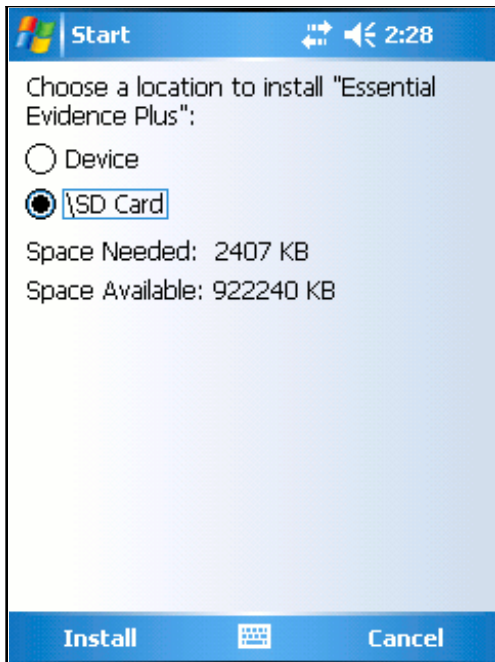
## 6. Install Essential Evidence Plus to your Palm OS device

In the EE+ status window, select **Tools** -> **(Re)-install EE+ on Pocket PC**. After a quick download, an installation process will launch for the Essential Evidence Plus for Pocket PC setup. Follow the instructions carefully.

During the install process, if your Pocket PC device has expansion memory available, you will be asked where you wish to install Essential Evidence Plus.

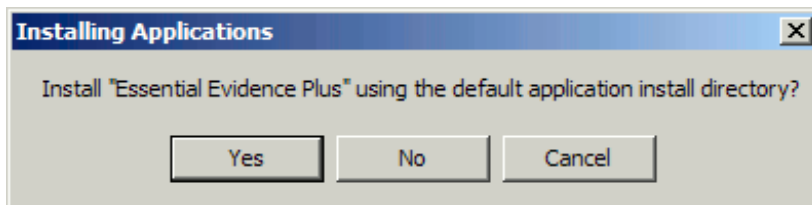
### Selecting the installation destination (on the device)

Once the installation files have been transferred to your device, you will encounter a screen similar to the following on your handheld. Select the desired destination.

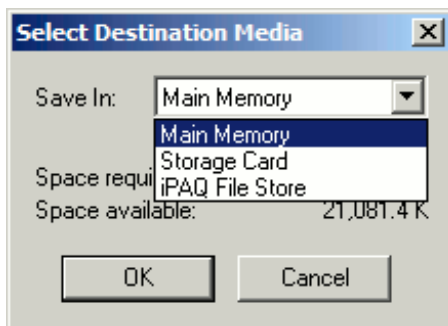


### Selecting the installation destination (on the PC)

In some cases, instead of seeing the above screen on your device, you may encounter the following dialog on your Windows desktop PC.

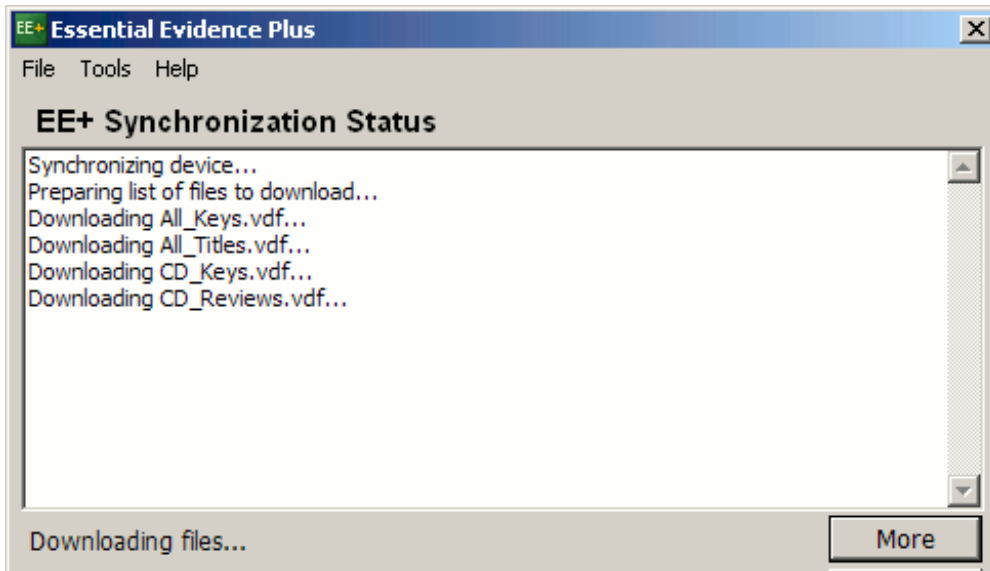


If you wish to install Essential Evidence Plus to your device's internal memory, select **Yes**. If you wish to install Essential Evidence Plus to your device's external memory, select **No**. Depending on your selection, you will see a screen like the following that will allow you to select the installation destination.



## 7. Disconnect and Re-Sync your device

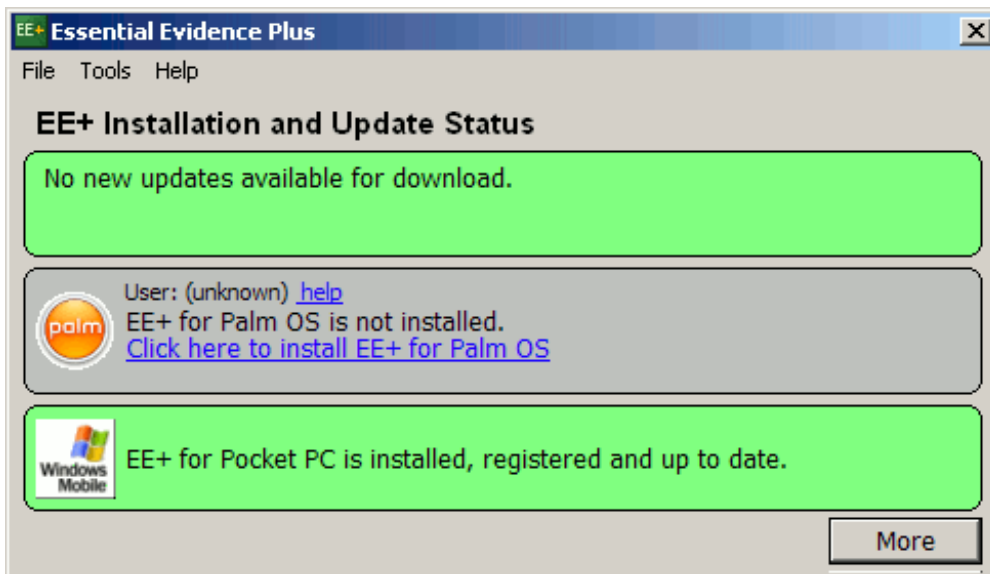
After the Essential Evidence Plus Setup has completed, disconnect your device from your desktop PC, wait a few seconds, and reconnect the device to your PC. When the ActiveSync connection is established, Essential Evidence Plus Updater will download and install the Essential Evidence Plus data files to your device. This process may take a while.



Once the installation has completed and the Updater has installed the data files, you should find an Essential Evidence Plus icon on your device under **Start -> Programs**.

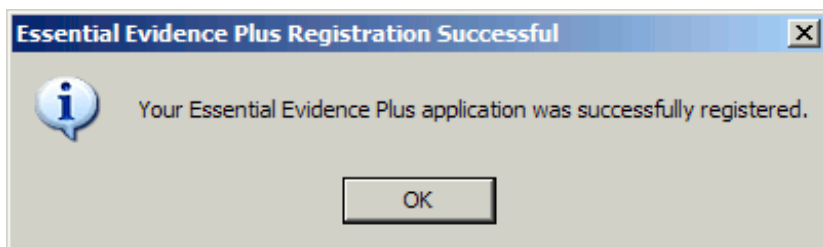
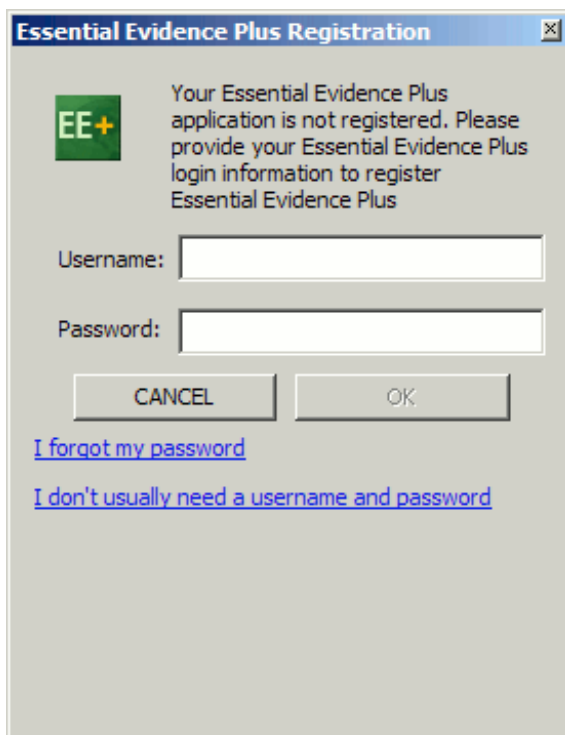
### Installation Complete

When the installation has completed, the Essential Evidence Plus status screen will show that EE+ for Palm OS is installed and up to date.



### Essential Evidence Plus Registration

During the ActiveSync process, the Updater software should attempt to automatically register the Essential Evidence Plus program. You may be required to provide the username and password for your subscription to complete the registration process.



If the Updater fails to automatically register Essential Evidence Plus, the program will stop functioning after 30 days unless a registration code is provided. Be sure to [register your copy of Essential Evidence Plus](#) so that the program will function for the full duration of your subscription.

# Installing Essential Evidence Plus for Palm OS (without Updater)

It is recommended that you [install Essential Evidence Plus for Palm OS with Essential Evidence Plus Updater software](#).

Follow these instructions for installing Essential Evidence Plus for Palm OS using a Windows PC without installing the Essential Evidence Plus Updater software. If you are installing Essential Evidence Plus using a non-Windows desktop operating system, or if you have had problems with this installation, please refer to [Installing Essential Evidence Plus for Palm OS \(Manual Method\)](#). If you are installing Essential Evidence Plus for Palm OS via a Mac OS X desktop computer, see [Installing Essential Evidence Plus for Palm OS \(Mac OS X\)](#).

## 1. Download the Essential Evidence Plus for Palm OS installation file

See [Getting Started: Downloading Essential Evidence Plus](#). When selecting your download, look for the **Essential Evidence Plus for Palm OS (without Updater)** installation file in the **Alternate Downloads** section.

## 2. Make sure Palm Desktop is up to date

Many common installation problems are due to problems in older version of the Palm Desktop software. Please ensure that you have installed the latest version of Palm Desktop. Refer to your device vendor for assistance.

## 3. Connect your device to your PC

Make sure that your Palm OS device is properly connected to your PC and that you can successfully perform a HotSync operation. Ensure that your expansion memory is fully inserted into the device (unless you are installing to a device with special expansion memory built in).

## 4. Install Essential Evidence Plus for Palm OS

Locate the installation file that you downloaded and double-click it to launch the installer. Follow the instructions in the installer carefully.

During the installation, you may be asked to select the Palm Desktop user for whom you are installing Essential Evidence Plus.

## 5. Perform a HotSync

This first of two required HotSync operations will install the Essential Evidence Plus program to your device.

## 6. Perform a Second HotSync

This second HotSync operation will install the Essential Evidence Plus resource and data files to your device. It may take much longer than a normal HotSync operation.

If you experience errors during the HotSync operation, or if the Essential Evidence Plus program does not appear to function properly, an additional HotSync operation may be required.

## 7. Register Essential Evidence Plus

All new installations of Essential Evidence Plus run in Demo Mode, and will stop functioning after 30 days unless a registration code is provided. Be sure to [register your copy of Essential Evidence Plus](#) so that the program will function for the full duration of your subscription.

# Installing Essential Evidence Plus for Pocket PC (without Updater)

It is recommended that you [install Essential Evidence Plus for Pocket PC with Essential Evidence Plus Updater software](#).

## 1. Uninstall previous versions of Essential Evidence Plus

Due to the limited storage space on handheld devices and the relatively large size of the Essential Evidence Plus program, it is recommended that you uninstall any previous versions of Essential Evidence Plus to ensure that there is sufficient space on the device for the installation process.

## 2. Download the Essential Evidence Plus for Pocket PC installation file

See [Getting Started: Downloading Essential Evidence Plus](#). When selecting your download, look for the **Essential Evidence Plus for Pocket PC (without Updater)** installation file in the **Alternate Downloads** section.

## 3. Make sure ActiveSync is up to date

Many installation problems can be solved by ensuring that you have the latest version of Microsoft ActiveSync installed on your desktop computer. ActiveSync can be found [on the Microsoft web site](#).

## 4. Connect your device to your PC

Make sure your Pocket PC device is in its cradle and that a connection to your desktop computer has been established with ActiveSync. If you will be installing Essential Evidence Plus to an external memory card, make sure the card is fully inserted into your device.

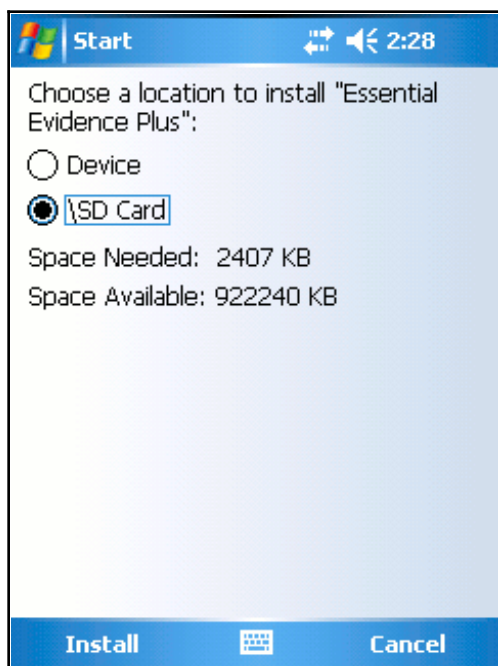
## 5. Install Essential Evidence Plus for Pocket PC

Locate the installation file that you downloaded and double-click it to launch the installer. Follow the instructions in the installer carefully.

During the install process, if your Pocket PC device has expansion memory available, you will be asked where you wish to install Essential Evidence Plus.

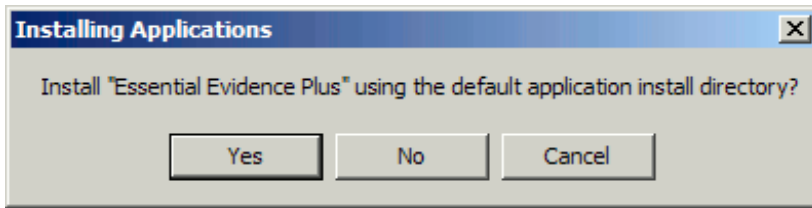
### Selecting the installation destination (on the device)

Once the installation files have been transferred to your device, you will encounter a screen similar to the following on your handheld. Select the desired destination.

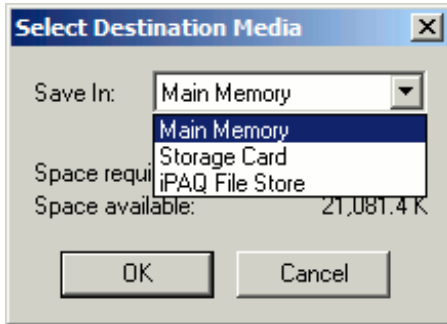


### Selecting the installation destination (on the PC)

In some cases, instead of seeing the above screen on your device, you may encounter the following dialog on your Windows desktop PC.



If you wish to install Essential Evidence Plus to your device's internal memory, select **Yes**. If you wish to install Essential Evidence Plus to your device's external memory, select **No**. Depending on your selection, you will see a screen like the following that will allow you to select the installation destination.



Once the installation has completed, you should find an Essential Evidence Plus icon on your device under **Start -> Programs**.

## 6. Register Essential Evidence Plus

All new installations of Essential Evidence Plus run in Demo Mode, and will stop functioning after 30 days unless a registration code is provided. Be sure to [register your copy of Essential Evidence Plus](#) so that the program will function for the full duration of your subscription.

# Installing Essential Evidence Plus for Palm OS (Manual Method)

These instructions assume that you are following the manual installation procedure using a PC running Microsoft Windows. It is recommended that you use the standard installation procedure if possible. See [Installing Essential Evidence Plus for Palm OS](#). If you are installing Essential Evidence Plus for Palm OS via a Mac OS X desktop computer, see [Installing Essential Evidence Plus for Palm OS \(Mac OS X\)](#).

## 1. Download the Essential Evidence Plus for Palm OS installation file

See [Getting Started: Downloading Essential Evidence Plus](#). When selecting your download, look for the **Essential Evidence Plus for Palm OS (ZIP)** installation file in the **Alternate Downloads** section. The file that you download should be a ZIP archive file, and have the extension **.zip**.

## 2. Make sure Palm Desktop is up to date

Many common installation problems are due to problems in older version of the Palm Desktop software. Please ensure that you have installed the latest version of Palm Desktop. Refer to your device vendor for assistance.

## 3. Connect your device to your PC

Make sure that your Palm OS device is properly connected to your PC and that you can successfully perform a HotSync operation. Ensure that your expansion memory is fully inserted into the device (unless you are installing to a device with special expansion memory built in).

## 4. Extract the Essential Evidence Plus files from the ZIP

Locate the Essential Evidence Plus for Palm ZIP file that you downloaded on your desktop computer. Use an appropriate program to extract the contents of the ZIP file to a temporary location on your hard drive (we recommend [7-zip](#)). Be sure to note of the location of the extracted files.

## 5. Install the Essential Evidence Plus PRC file

- Start the "Palm Quick Install" Program (or it may be called "Install Tool"), which is typically located on the **Start Menu -> Programs -> Palm Desktop**. The install tool is also accessible from within the Palm Desktop program.
- Be sure the Palm Desktop user for whom you wish to install Essential Evidence Plus is selected.
- Click the "Add..." button.
- Browse to the location where you extracted the Essential Evidence Plus files.
- Select the file named **InfoRetriever.prc** and click **Open**.
- The destination of the file should be "Handheld".
- Close the Install tool by clicking the **Done** button, or by choosing **File -> Exit**.
- Perform a HotSync operation with your Palm handheld. This HotSync operation should not take much longer than your typical HotSync.

## 6. Initialize Essential Evidence Plus on your device

Before you can install the Essential Evidence Plus data files to your device, the Essential Evidence Plus program must be initialized.

On your device, tap the Home icon (or press the Home button) to show the main programs list, and locate the **IR** Essential Evidence Plus icon. If you do not see the icon, select "All" from the dropdown at the top right corner of the screen, and scroll the programs list until you locate the **IR** icon. Tap the Essential Evidence Plus icon.

Essential Evidence Plus may report an error. This is OK. Tap the HOME icon/button to return to the programs list.

Essential Evidence Plus is now initialized. If you removed your Palm device from its cradle, put it back in the cradle now.

## 7. Install the Essential Evidence Plus data (.vdf) files

- Start the "Palm Quick Install" Program (or "Install Tool") again. (**Start Menu -> Programs -> Palm Desktop**, or from within the Palm Desktop program).
- Be sure the Palm Desktop user for whom you wish to install Essential Evidence Plus is selected.
- Click the "Add..." button.
- Browse to the location where you extracted the Essential Evidence Plus files. Browse to the **PALM\_VDF** folder.
- Select **all** of the VDF files in this directory and click **Open**.  
**HINT:** You may need to select **Files of Type: "All Files (\*.\*)"** to see the VDF files.  
**HINT:** To quickly select all files in a directory, select one file, then press Ctrl-a.
- Click the "Add..." button.

- The destination of the file should be "Expansion Card", "SD Card", or similar.
- Close the Install tool by clicking the **Done** button, or by choosing **File -> Exit**.
- Perform another HotSync operation with your Palm handheld.

This second HotSync will take much longer than the first. The time varies widely depending on the device, usually between 5 and 60 minutes.

If you experience errors during the HotSync operation, or if the Essential Evidence Plus program does not appear to function properly, an additional HotSync operation may be required.

## 8. Register Essential Evidence Plus

All new installations of Essential Evidence Plus run in Demo Mode, and will stop functioning after 30 days unless a registration code is provided. Be sure to [register your copy of Essential Evidence Plus](#) so that the program will function for the full duration of your subscription.

# Installing Essential Evidence Plus for Palm OS (Mac OS X)

These instructions assume that you are following the manual installation procedure using a desktop computer running Mac OS X. If you have a PC running Microsoft Windows, please refer to [Installing Essential Evidence Plus for Palm OS](#). If you have had trouble with the standard Windows installation, see [Installing Essential Evidence Plus for Palm OS \(Manual Method\)](#).

Please note that this procedure has been tested with the Palm Desktop software for Mac OS, and may not work properly if you use other software to sync your Palm OS device to your Mac. In particular, we have had reports that this procedure does not work properly with *The Missing Sync* software.

## 1. Download the Essential Evidence Plus for Palm OS installation file

See [Getting Started: Downloading Essential Evidence Plus](#). When selecting your download, look for the **Essential Evidence Plus for Palm OS (ZIP)** installation file in the **Alternate Downloads** section. The file that you download should be a ZIP archive file, and have the extension **.zip**.

## 2. Make sure Palm Desktop is up to date

Many common installation problems are due to problems in older version of the Palm Desktop software. Please ensure that you have installed the latest version of Palm Desktop. Refer to your device vendor for assistance.

## 3. Connect your device to your PC

Make sure that your Palm OS device is properly connected to your PC and that you can successfully perform a HotSync operation. Ensure that your expansion memory is fully inserted into the device (unless you are installing to a device with special expansion memory built in).

## 4. Extract the Essential Evidence Plus files from the ZIP

Locate the Essential Evidence Plus for Palm ZIP file that you downloaded to your Mac OS computer. This file may be located on your Desktop. Double-click the file to expand it with Stuffit. This will create a new folder in the same location as the ZIP file, with a similar name. This new folder should contain one file named **InfoRetriever.prc** and one folder named **PALM\_VDF**.

## 5. Install the Essential Evidence Plus PRC file

- Open the Palm Desktop Program. (If you need to locate Palm Desktop with the Finder program, it is usually located on your Hard Drive under Applications -> Palm -> Palm Desktop.)
- From Palm Desktop, select **HotSync -> Install Handheld Files...** from the Menu.
- Be sure that the correct User is selected from the dropdown menu.
- Using the Finder program, locate the folder that was created when you expanded the InfoREssential Evidence Plusallation file. Drag the file named Essential Evidence Plus.prc into the **Install Handheld Files...** window.
- The destination of the file should be "Handheld".
- Perform a HotSync operation with your Palm handheld. This HotSync operation should not take much longer than your typical HotSync.

## 6. Initialize Essential Evidence Plus on your device

Before you can install the Essential Evidence Plus data files to your device, the Essential Evidence Plus program must be initialized.

On your device, tap the Home icon (or press the Home button) to show the main programs list, and locate the **IR** Essential Evidence Plus icon. If you do not see the icon, select "All" from the dropdown at the top right corner of the screen, and scroll the programs list until you locate the **IR** icon. Tap the Essential Evidence Plus icon.

Essential Evidence Plus may report an error. This is OK. Tap the HOME icon/button to return to the programs list.

Essential Evidence Plus is now initialized. If you removed your Palm device from its cradle, put it back in the cradle now.

## 7. Install the Essential Evidence Plus data (.vdf) files

- Make sure that the **Install Handheld Files...** window is still open and that the correct User is still selected.
- Using Finder, locate again the folder that was created when you expanded the Essential Evidence Plus installation file. Open the PALM\_VDF folder, which should contain a number of files with the extension **.vdf**.
- Select all of the .vdf files at once, and drag them into the **Install Handheld Files...** window.
- The destination of the file should be "Secure Digital (SD) Card", or another expansion memory card.
- Perform another HotSync operation with your Palm handheld.

This second HotSync will take much longer than the first. The time varies widely depending on the device, usually between 5 and 60 minutes.

If you experience errors during the HotSync operation, or if the Essential Evidence Plus program does not appear to function properly, an additional HotSync operation may be required.

## 8. Register Essential Evidence Plus

All new installations of Essential Evidence Plus run in Demo Mode, and will stop functioning after 30 days unless a registration code is provided. Be sure to [register your copy of Essential Evidence Plus](#) so that the program will function for the full duration of your subscription.

# Getting Started: Registering Essential Evidence Plus

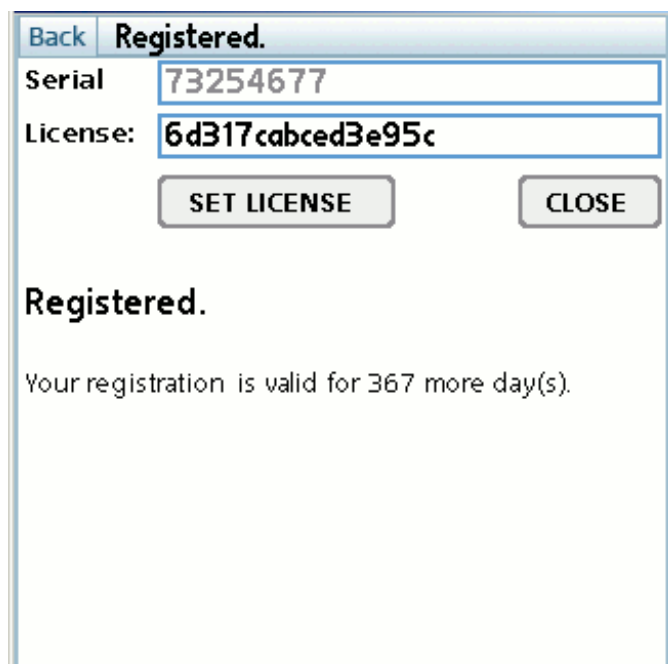
If you have the Essential Evidence Plus Updater application installed to your Windows desktop computer, Essential Evidence Plus should be automatically registered when you sync your Palm OS or Pocket PC device. The registration process may require you to enter your username and password.

If you have not installed Essential Evidence Plus Updater, or the automatic registration process fails, please follow these instructions for manually registering Essential Evidence Plus.

## Manual Registration Instructions

1. Determine the Essential Evidence Plus **SerialID** by launching Essential Evidence Plus on your Palm OS or Pocket PC device or and selecting **File -> Register** from the application menu.

*NOTE: The Serial ID is **NOT** the Serial Number that is printed on the outside of your device. The Serial ID can only be found from within the Essential Evidence Plus program.*



2. Obtain a **License code** by visiting the [Essential Evidence Plus registration form](#) and following the instructions provided.
3. Enter the **License code** into Essential Evidence Plus by selecting **File -> Register** from the application menu. Once you have entered the license code, tap **Set License**.

Once Essential Evidence Plus is properly registered, the registration screen will show your expiration date.

---

## Registration Difficulties?

If you experience difficulties registering your Essential Evidence Plus program, consult our [Frequently Asked Questions](#), where you are likely to find an answer. If you cannot solve your problem with the assistance of our FAQ pages, please [contact us](#).

# Searching & Browsing: Overview

## Understanding Searches

Essential Evidence Plus offers a number of options for searching the collection of resources included with the program, but fundamentally Essential Evidence Plus features a keyword-driven search.

Essential Evidence Plus is point-of-care tool, and due to the limited computing power of handheld devices, full-text searching of the resources included in Essential Evidence Plus is impractical. As a busy healthcare-professional, waiting more than a few seconds for the results of a search is unacceptable. Therefore, all of Essential Evidence Plus's resources are indexed on appropriate ICD-9 codes, generic and trade drug names, and other common medical terms.

Essential Evidence Plus makes the search process easier, however, by eliminating the need for the health professional to know what keywords are available in order to effectively search for the required information. With Essential Evidence Plus's **Search by any word** technology, a free text search assists the user in finding the most appropriate keywords for the desired topic.

For detailed search help on a Palm OS or Pocket PC device, please refer to [Searching & Browsing: Palm OS & Pocket PC](#).

For the Web, refer to [Searching & Browsing: Web](#).

For an overview of the different resources included in Essential Evidence Plus, see [Searching & Browsing: Databases Searched](#).

## Refining Search Results

Essential Evidence Plus Search results are organized by clinical content area. On Essential Evidence Plus for PalmOS or PocketPC and Essential Evidence Plus on the Web, this organization is presented as the *Refine by type of result* options. The following list shows all possible content areas in the order in which they are displayed in search results.

- Overviews and practice guidelines
  - EBM Guidelines
  - Practice Guidelines
- Treatment
  - General Treatment
  - Drug Treatment
  - Surgery, anesthesia, and procedures
  - Diet, vitamins, exercise, PT, and OT
  - Harm
  - Treatment by Drug (POEMs/Cochrane only)
- Diagnosis
  - Differential diagnosis
  - History and physical test calculators
  - Diagnostic tests
  - Clinical rules and calculators
  - Miscellaneous diagnosis
- Screening and Prevention
  - Screening for disease
  - Prevention (primary)
- Prognosis
  - Prognosis of disease / natural history
  - Follow-up tests and monitoring
- Epidemiology
  - Causation and etiology
  - Incidence and prevalence of disease
  - Risk Factor for disease
- Practice Administration/Health Systems
  - Education

- Patient education

In addition, each search result is tagged with an icon that represents the resource in which the article was found.

- Essential Evidence
- EBM Guidelines
- Decision Support Calculators
- Cochrane Database of Systematic Reviews
- Diagnostic Test Calculators
- History and Physical Test Calculators
- Daily POEMs
- Practice Guidelines
- Patient Education Handouts

# Searching & Browsing: Web

Essential Evidence Plus for the Web presents a simple but powerful search for the resources included in Essential Evidence Plus. At any point in a search, all results that match the selected criteria are displayed. Refinement options may be available to further narrow the results, and the option to remove any of the previously selected refinement options is available.

Start searching, or select a specific Database or Tool to browse.

## Search the complete EE+ collection

This is a standard free-text search of all resources available in Essential Evidence Plus. It supports basic boolean terms (AND, OR) and exact strings in quotes. Results can be sorted by relevance, alphabetical by title, or by date to locate the most recent content. Additional refinement options may be available.

## Browse Essential Evidence

When a subject area is selected, all Essential Evidence articles indexed under the selected subject area will be displayed, sorted alphabetically by title.

## Browse Cochrane Systematic Reviews

When a subject area is selected, all Cochrane articles indexed under the selected subject area will be displayed, sorted alphabetically by title.

## Browse EBMG clinical topics

When a subject area is selected, all EBM Guidelines and Evidence Summaries indexed under the selected subject area will be displayed, sorted alphabetically by title.

## Browse NGC Practice Guidelines

When a subject area is selected, all Practice Guidelines indexed under the selected subject area will be displayed, sorted alphabetically by title.

## Browse Daily POEMs

Daily POEMs synopses can be browsed by the year and month in which they were published. "Browse by Subject Area" is also available; when a subject area is selected, all POEMs synopses indexed under the selected subject area will be displayed, sorted alphabetically by title.

## Browse Clinical Rules and Calculators

Decision Support Tools and Calculators are organized into Chapters. When a chapter is selected, all calculators within the chapter are displayed.

## Derm Expert

This tool helps you diagnose various skin conditions by morphology and pictorial comparison. It contains hundreds of photos of various skin conditions in a simple browsable interface.

## E/M Coding

This tool helps you determine the most appropriate code to use for Medicare's Evaluation and Management Services, and provides an indication of what additional criteria must be met to qualify for the next code level.

## ICD-9 Codes

This tool provides a search for the 1500 commonly used general practice ICD-9 codes. Search can be performed by code to identify nearby diseases, or by disease or symptom to get matching codes.

# Searching & Browsing: Palm OS & Pocket PC

## Searching Essential Evidence Plus

- Search
- Browse the complete collection
- Browse Essential Evidence
- Browse EBM Guidelines
- Browse Practice Guidelines
- Browse Daily POEMs
- Browse Clinical Rules and Calculators

## Other Features

- Derm Expert
- ICD-9 Code Look-up
- E/M Coding Wizard
- Favorites
- CME
- Drug Database Linking
- Essential Evidence Plus Options

---

## What's Included in Essential Evidence Plus

Essential Evidence Plus includes material from many different medical references, and covers thousands of topics. It includes the latest evidence-based information, and is the only medical reference in the world to integrate this breadth of information in a single, easy-to-use search interface. Essential Evidence Plus includes:

- **POEMs:** Over 2600 **Patient-Oriented Evidence that Matters** summaries. Brief, evidence-based summaries of recent medical literature. These summaries are an original product of InfoPOEM, Inc.
- **Cochrane Database of Systematic Reviews:** Almost 2200 abstracts from the "gold-standard" for evidence-based practice.
- **Practice guidelines:** Summaries of over 750 selected, evidence-based practice guideline summaries, including every evidence-based guideline from the NGC.
- **Clinical Decision Rules:** More than 230 useful Clinical Rules and Calculators that are derived from recent medical literature.
- **Diagnostic Test Calculator:** Information on test accuracy and interpretation for about 1200 unique combinations of symptom, diagnosis, and test in an easy-to-use calculator.
- **History and Physical Calculator:** Information on the accuracy of the history and physical exam in an easy-to-use calculator.
- **Evidence-Based Medicine Guidelines:** The complete set of EBM Guidelines and Evidence Summaries, approximately 4000 articles, as well as almost 1000 related photographs.
- **ICD-9 Lookup Tool:** A searchable collection of 1500 commonly used ICD-9 codes.

---

## Registering Essential Evidence Plus

When you first install Essential Evidence Plus, the program will run as a 30-day, full-featured demo. Once the 30-day demo period has passed, Essential Evidence Plus will no longer function. To continue to use Essential Evidence Plus, a valid License Code must be provided.

The License Code that you obtain through the registration process will be valid for this device only, and will expire when your (or your Organization's) Essential Evidence Plus subscription expires. If you purchase a new handheld device, or when you renew your Essential Evidence Plus subscription, you will need to repeat the registration process to obtain a new License Code.

The Essential Evidence Plus Updater application should automatically register your installation of Essential Evidence Plus the first time you sync your device after installation. If you are not using the Updater or the automatic registration is not successful, you will need to visit the Essential Evidence Plus website to obtain a registration code and enter it into the program. Registration Instructions are available on the Essential Evidence Plus Web site (<http://www.essentialevidenceplus.com/support/registration.cfm>), or you may contact us by phone or email for assistance.

## Search Overview

Due to the limited computing power of most handheld devices, a full-text search of the many resources included in Essential Evidence Plus is impractical. When sitting with a patient, waiting a minute or two for each search to complete is not acceptable. Therefore, Essential Evidence Plus utilizes a topic-based search in which every resource is indexed on appropriate ICD-9 codes, other common medical terms, and generic and trade names for most drugs.

It is important to keep this in mind when performing searches in Essential Evidence Plus, and it may take a short time to get used to this type of search.

However, Essential Evidence Plus can make the search process easier than many standard keyword-based search tools. Typically, you must know exactly what keywords are available in order to effectively search for the information that you need. Essential Evidence Plus provides a free-text search that will find the most appropriate topics for the terms that you enter, so that you do not need to know the exact topic name in order to perform a search. In addition, Essential Evidence Plus allows you combine topics to broaden or narrow your search, and to refine your searches by a particular type of resource.

---

## Search

This is the default search strategy, and probably the most effective when you want to search all of the references in the entire Essential Evidence Plus database. It uses a combination of text and topic searching to give you the best possible results.

- **Search the complete Essential Evidence Plus collection:** Enter your search terms in the main search box on the Home screen, and tap the **SEARCH** button.  
**HINT:** It is best to select one or two words (a disease, symptom, or drug name) that most specifically describes what you are looking for.  
**HINT:** Save typing time. Essential Evidence Plus recognizes many abbreviations and partial terms.  
**HINT:** Avoid **and**, **or**, and **not**, as well as clinical process terms like **diagnosis** and **prognosis**, as they are ignored. You will be able to further refine your results later.
- **Topic Selection:** Essential Evidence Plus will identify all topics that resemble or are related to your search term(s). Select the topic(s) that best match what you're looking for by tapping on them.
- To find articles that are related to any of the selected topics (broad search), select the **Match any selected topic** option. To find only those articles that are related to all of the selected topics (narrow search), select the **Match all selected topics** option.
- Tap **Go!**
- **Search Results:** The results of the search for the selected topic(s) will be displayed on the screen. The top of the screen will indicate how many resources matched your topic search. If there are many results, they are displayed on multiple pages, which can be accessed by tapping the appropriate page number at the bottom of the screen.
- **Refine your results:** The first search results screen provides two options for further refining your search results. The first dropdown will narrow your results by type of information that the article covers, such as **Overview**, **Differential Diagnosis**, or **Drug Treatment**. The second dropdown will narrow your results to the selected resource, such as **POEMs**, **Practice Guidelines**, or **Clinical Rules**.
- When you have identified a resource of interest, tap on the item to view it. To return to your search results, tap the back button (<<) at the top left of the screen.
- To start a new search, tap the **HOME** button at the top of the screen.

---

## Browse the complete Essential Evidence Plus collection

As an alternative to the default search, you can browse all of the topics covered in Essential Evidence Plus by their system or category.

- **Browse the complete Essential Evidence Plus collection:** Tap the **BROWSE** button on the Home screen.
- **Categories:** Select the system or category that you would like to browse from the list.
- **Topics:** All Essential Evidence Plus topics relating to the selected category are listed in alphabetical order. Select the topic of interest.
- All Essential Evidence Plus articles relating to the selected topics will be displayed on the screen. If there are many results, they are displayed on multiple pages, which can be accessed by tapping the appropriate page number at the bottom of the screen.
- When you have identified a resource of interest, tap on the item to view it. To return to your search results, tap the back button (<<) at the top left of the screen.
- To start a new search, tap the **HOME** button at the top of the screen.

---

## Browse Essential Evidence

This option works just like the **Browse the complete Essential Evidence Plus collection** functionality, but you will only be shown Essential Evidence articles.

- **Browse Selected Resource:** Choose **Essential Evidence** from the dropdown on the Home screen.
- **Categories:** Select the system or category that you would like to browse from the list.

- **Topics:** All Essential Evidence Plus topics relating to the selected category are listed in alphabetical order. Select the topic of interest.
- All Essential Evidence articles relating to the selected topics will be displayed on the screen. If there are many results, they are displayed on multiple pages, which can be accessed by tapping the appropriate page number at the bottom of the screen.
- When you have identified an article of interest, tap on the item to view it. To return to the list of articles, tap the back button (<<) at the top left of the screen.
- To start a new search, tap the **HOME** button at the top of the screen.

## Browse EBM Guidelines

This option works just like the **Browse the complete Essential Evidence Plus collection** functionality, but you will only be shown EBM Guidelines.

- **Browse Selected Resource:** Choose **EBM Guidelines** from the dropdown on the Home screen.
- **Categories:** Select the system or category that you would like to browse from the list.
- **Topics:** All Essential Evidence Plus topics relating to the selected category are listed in alphabetical order. Select the topic of interest.
- All EBMG articles relating to the selected topics will be displayed on the screen. If there are many results, they are displayed on multiple pages, which can be accessed by tapping the appropriate page number at the bottom of the screen.
- When you have identified an article of interest, tap on the item to view it. To return to the list of articles, tap the back button (<<) at the top left of the screen.
- To start a new search, tap the **HOME** button at the top of the screen.

## Browse Practice Guideline

This option works just like the **Browse the complete Essential Evidence Plus collection** functionality, but you will only be shown Practice Guideline articles.

- **Browse Selected Resource:** Choose **Practice Guidelines** from the dropdown on the Home screen.
- **Categories:** Select the system or category that you would like to browse from the list.
- **Topics:** All Essential Evidence Plus topics relating to the selected category are listed in alphabetical order. Select the topic of interest.
- All Practice Guideline articles relating to the selected topics will be displayed on the screen. If there are many results, they are displayed on multiple pages, which can be accessed by tapping the appropriate page number at the bottom of the screen.
- When you have identified a Guideline of interest, tap on the item to view it. To return to the list of articles, tap the back button (<<) at the top left of the screen.
- To start a new search, tap the **HOME** button at the top of the screen.

## Additional options

In addition to browsing Practice Guidelines by Category, Essential Evidence Plus also offers shortcuts to common types of Practice Guidelines. After selecting **Practice Guidelines** from the dropdown on the Home screen, tap one of the following links.

- **NNT:** A collection of Number Needed to Treat values collected from Evidence-Based research, organized by disease and treatment.
- **Drug of Choice:** Concise guidelines showing charts of recommended drugs and doses for particular conditions. Compiled by the Essential Evidence Plus editors from various literature sources.
- **Immunization:** The latest immunization schedules as provided by the CDC's Advisory Committee on Immunization Practices.
- **USPSTF Guidelines:** Quickly locate all of the recommendations released by the U.S. Preventive Services Task Force.

## Browse Daily POEMs

This option works just like the **Browse the complete Essential Evidence Plus collection** functionality, but you will only be shown Daily POEMs articles.

- **Browse Selected Resource:** Choose **Daily POEMs** from the dropdown on the Home screen.
- **Categories:** Select the system or category that you would like to browse from the list.
- **Topics:** All Essential Evidence Plus topics relating to the selected category are listed in alphabetical order. Select the topic of interest.
- All Daily POEMs relating to the selected topics will be displayed on the screen. If there are many results, they are displayed on multiple pages, which can be accessed by tapping the appropriate page number at the bottom of the screen.
- When you have identified a Daily POEM of interest, tap on the item to view it. To return to the list of articles, tap the back button (<<) at the top left of the screen.

- To start a new search, tap the **HOME** button at the top of the screen.

## Browse Daily POEMs by Date

In addition to browsing Daily POEMs by Category, you may also browse Daily POEMs by the month and year that they were published.

- After selecting **Daily POEMs** from the dropdown on the Home screen, tap the **Browse by Date** link.
- Select the month and year to browse.
- All Daily POEMs published during the selected month and year will be displayed, grouped by the type of Daily POEM. Expand the sections by tapping on the plus sign [+].
- When you have identified a Daily POEM of interest, tap on the item to view it. To return to the list of articles, tap the back button (<<) at the top left of the screen.
- To start a new search, tap the **HOME** button at the top of the screen.

---

## Browse Clinical Rules and Calculators

This option allows you to browse all of the Clinical Rules and Calculators. This may be useful if you are looking for a particular calculator or would like to discover what calculators exist for a particular system.

- **Browse Selected Resource:** Choose **Clinical Rules and Calculators** from the dropdown on the Home screen.
- **Categories:** Select the system or category that you would like to browse from the list.
- All of the available Clinical Rules and Calculators for the selected Category will be displayed in a list.
- When you have identified a Calculator of interest, tap on the item to view it. To return to the list of articles, tap the back button (<<) at the top left of the screen.
- To start a new search, tap the **HOME** button at the top of the screen.

---

## Derm Expert

Essential Evidence Plus includes hundreds of dermatology pictures. You can navigate these pictures by browsing the morphology and characteristics of a skin condition.

- **Browse Selected Resource:** Choose **Derm Expert** from the dropdown on the Home screen.
- Using the dropdown, select the primary morphology of the skin condition you are examining, then press the Continue button.
- Continue selecting characteristics until you are prompted to continue.
- Select each condition you wish to examine from the list, and press Continue
- Examine an image more closely by tapping on it. If there are many images, they will be spread over multiple pages. Select a different page by clicking on the corresponding page number at the bottom.

---

## ICD-9 Code Look-up

Essential Evidence Plus includes over 1500 commonly used ICD-9 codes. You can search by code and get nearby diseases, or search by disease or symptom and get matching codes.

- **Browse Selected Resource:** Choose **ICD-9 Codes** from the dropdown on the Home screen.
- Select whether to Search by code or name, by selecting the corresponding radio button.
- Type in the numeric code (if Search by code) or a disease or symptom (if Search by name), and tap **Find**.
- A list of matching diseases and codes will be shown. Tap on a code to see a set of nearby terms.
- To close the ICD-9 tool, tap the **BACK** button at the top of the screen.

---

## E/M Coding Wizard

This tool helps you determine the most appropriate code to use for Medicare's Evaluation and Management Services.

- **Browse Selected Resource:** Choose **E/M Coding** from the dropdown on the Home screen.
- Adjust all fields according to the patient visit.
- Tap **Result** to see the suggested code for the visit. Tap the **BACK** button at the top of the screen to return to the tool.
- Tap **Upcode?** to see a list of items that would be required for this visit to qualify for the next level of visit. Tap the **BACK** button at the top of the screen to return to the tool.

- To close the E/M Coding tool, tap the **BACK** button at the top of the screen.

---

## Favorites

Favorites are a collection of the resources that you find most useful and would like to quickly access. When you find a guideline or a Clinical Calculator that you especially like, or there is a guideline or Calculator that you find yourself searching for often, you can add it to your Favorites so that you can instantly access it without having to search for it each time.

Use and manage your Favorites from the **Favorites** Application Menu. If you have never used the Favorites feature before, you will only see one item on the **Favorites** menu: **Organize favorites**.

If you are viewing an article or clinical rule or calculator, and you would like to bookmark the resource for quick access at a later time, select **Add current to Favorites** from the **Favorites** Application Menu while you are viewing the article. The current article will now appear in your **Favorites** menu.

You can change the order of your Favorites and remove Favorites from the list by selecting **Organize Favorites** from the **Favorites** Application Menu.

---

## CME

Most Essential Evidence Plus searches qualify for Continuing Medical Education credit. Each qualifying search may be claimed as a half (0.5) AMA PRA Category 1 Credit after completion of the three-step learning cycle.

- Tap the **CME** button at the top of the screen, or select **Tools** -> **CME** from the application menu, to display the CME Account summary screen. This screen reports how many recent searches qualify for CME credit, as well as how many searches for which credit has already been earned.
  - To record earned CME credits to your Essential Evidence Plus CME account, sync your device to a PC running the Essential Evidence Plus Updater application.
  - To earn credit on recent searches, tap the **EARN CME** button.
  - Select a recent search for which you would like to earn CME credit, and tap **CONTINUE**
  - **Applicability:** Select the option(s) that best describe the question you were trying to answer when you performed the search and tap **CONTINUE**. If you select **None of the above**, you will be prompted to briefly describe the question you were trying to answer.
  - **Implication:** Select the option(s) that best describe how the information you encountered in your search has affected your practice, and tap **CONTINUE**.
  - Tap **CLOSE** to exit the CME dialog and return to your previous screen.
- 

## Drug Database Linking

Essential Evidence Plus does not include a drug database of its own. However, if you have the Lexi-Comp Reader or Tarascon programs installed on your handheld device, you can easily look up drug information from within Essential Evidence Plus.

Drug names are highlighted as blue links in articles. Tap on any highlighted drug name, and the configured drug database application will launch and display information regarding the selected drug.

When you have finished reviewing the drug information, return to Essential Evidence Plus and pick up where you left off.

The Drug Linking feature must be enabled to work. If it is not enabled, drug names will not display as links. To enable the Drug Linking feature, select **Tools** -> **Options** from the Application Menu.

---

## Essential Evidence Plus Options

There are a few settings that you can use to control the way Essential Evidence Plus looks and behaves. These settings are available from the **Tools** -> **Options** Application Menu.

- **Preferred Units** -- Some Essential Evidence Plus tools can display units in either Metric or SI. Use this option to specify which units will be displayed. Note that not all tools in Essential Evidence Plus respect this option yet.
- **Drug Database Application** -- Essential Evidence Plus can link to an external Drug Database program to quickly find information about a particular drug. You must have one of the supported drug applications installed on your device in order for this feature to work, and the Drug Database program may need to be appropriately licensed. Use this option to specify which external Drug Database program should be used when searching for information about a drug. If Essential Evidence Plus cannot locate an installation of the drug database, you will not be able to select the option.
- **CME** -- This option specifies whether you would like to see reminders when you have searches that qualify for CME credit each time you launch the program.
- **Enable Log** -- Essential Evidence Plus Support staff may ask you to enable this option when troubleshooting a problem.

# Searching & Browsing: Databases Searched

Essential Evidence Plus searches 7 different databases. Select one of the databases listed below for a description of the database and its purpose, as well as an example of how it can be used in the clinical decision process.

- Essential Evidence
- EBM Guidelines
- Decision Support Calculators
- POEMs
- Diagnostic Test Calculators
- History and Physical Test Calculators
- Abstracts of Cochrane Systematic Reviews
- Evidence-based Practice Guideline Summaries

These additional resources are also available:

- Number Needed to Treat
- Derm Expert
- Understanding Diagnostic Calculators
- Patient Education Handouts (Web only)

---

## Essential Evidence

Essential Evidence is the unique, easy-to-use resource of Essential Evidence Plus. It comprehensively and concisely covers the most common conditions and diseases. It collects and synthesizes the best available evidence in one place. All content is richly hyperlinked to the other evidence-based medicine resources within Essential Evidence Plus including the decision support tools, diagnostic calculators, Cochrane Abstracts, POEMs, and practice guidelines. Continuously updated, Essential Evidence follows the latest developments in clinical medicine and brings evidence into practice.

**Purpose:** A quick, comprehensive evidence-based reference to assist clinicians with clinical questions concerning diagnosis and treatment at the point of care.

**Example:** Clinicians can use Essential Evidence to not only save time but more importantly improve health outcomes, efficiency, and treatment because it makes the best available evidence accessible in one place by topic.

**Detailed Description:** Essential Evidence Plus is designed to join the best available evidence in a single database. Essential Evidence summarizes the best available evidence on many common clinical topics, providing information about prevention, screening, symptoms, treatment, prognosis, and more.

---

## EBM Guidelines

EBM Guidelines is a unique, concise and easy-to-use collection of clinical guidelines for primary care combined with the best available evidence. EBM Guidelines includes #getIRStat("ebmg", true)# concise primary care practice guidelines, #getIRStat("evd", true)# high quality evidence summaries and a library of hundreds of photographs and images. Continuously updated, EBM Guidelines follows the latest developments in clinical medicine and brings evidence into practice.

**Purpose:** To offer the best evidence-based information about a clinical condition

**Example:** Clinicians who wish to review evidence-based information about a disease and its treatment often use EBM Guidelines

**Detailed Description:** Essential Evidence Plus is designed to join the best available evidence in a single database. EBM Guidelines summarize the best available evidence on many common clinical topics, providing information about classification, treatment, etc. EBM Guidelines also provides links to references supporting the evidence.

---

## Decision Support Calculators

#getIRStat("decision", true)# calculators designed to help estimate the likelihood of a diagnosis, calculate a patient's risk for disease, estimate a prognosis, or calculate a drug dose

**Purpose:** To support the clinical decision making of a healthcare professional by offering risk and probability assessments

**Example:** The clinical decision rules can help evaluate patients with ankle sprains, estimate the risk of stroke in patients with atrial fibrillation, or assist in determining doses of drugs like warfarin.

**Detailed Description:** These clinical decision rules are created based on results of valid and relevant studies. Each calculator has a **More Info** button that references the study and outlines its characteristics. Each calculator asks users to provide patient information and leads to a result that is specific for the patient.

---

## Daily POEMs

Daily POEMs ("Patient-Oriented Evidence that Matters"<sup>TM</sup>) are synopses of new evidence carefully filtered for relevance to patient care and evaluated for validity. POEMs emerge from continuous review, grading, and critical appraisal of all 1200+ studies published monthly in more than 100 journals. There are currently `#getIRStat("poems", true)#` Daily POEMs in the collection.

**Purpose:** To offer the latest research findings and help users understand how to apply the research results to their clinical practice

**Example:** Within three weeks of publication, important study results are incorporated into an InfoPOEM. Instead of reading all the journals we summarize, readers can rely on the POEM evaluation system to find relevant and valid information and present it in an easy to understand format.

**Detailed Description:** After selecting a title, the InfoPOEM outlines the question the study addresses, the bottom line answer, a critical summary of the study methods and results, and a level of evidence ranking.

---

## Diagnostic Test Calculators

Calculators of the clinical performance of a diagnostic test

**Purpose:** To help clinicians choose the best diagnostic test and interpret the test results

**Example:** The calculator answers questions such as: What is the best test to rule out renal artery stenosis? What is the likelihood to Trichomonal infection in women with Trichomonas on pap smear? What is the 10-year mortality risk for a patient who smokes and has hypertension?

**Detailed Description:** The tool offers test characteristics and an estimate of the probability of disease before doing the test. The calculator also outlines the probability of the disease based upon the results of test. Users can choose from one of several tests based on what is available and whether they are interested in ruling-in or ruling-out a disease. Additionally, users can change the probability of disease based upon a clinical decision rule or gestalt. This allows users to tailor test result interpretations to the clinical circumstances.

See [Understanding Diagnostic Calculators](#) for more information.

---

## History and Physical Test Calculators

Calculators of the value of various history or physical findings

**Purpose:** To support the clinical decision making of a clinician by offering information regarding the likelihood of patients having a disease based on information gathered during a history and physical evaluation

**Example:** What is the likelihood of strep throat in a patient with tonsillar exudates? In a patient with low back pain, what symptoms are indicators of ankylosing spondylitis?

**Detailed Description:** The calculator gives users the probability of the disease based upon the results of clinical evaluation before doing additional testing. Users can choose one of several elements of the history and physical. They can also change the probability of disease based upon a clinical decision rule or gestalt. This allows users to tailor interpretation of the clinical circumstances to decide if additional testing is worthwhile.

See [Understanding Diagnostic Calculators](#) for more information.

---

## Abstracts of Cochrane Systematic Reviews

Summaries of systematic reviews from the Cochrane Library, the most rigorous and reliable evaluations of medical therapies

**Purpose:** To offer summarized evaluations of the worlds best literature on the effectiveness of therapy for almost 2,200 clinical problems

**Example of use:** Answers to questions such as: Are corticosteroids effective in the treatment of acute ischemic stroke? Are back schools effective? Should antibiotics be used to treat bacterial vaginosis in pregnant women?

**Detailed Description:** The Cochrane Systematic Reviews are considered the gold standard for evidence-based medicine. Each systematic review starts with identifying all relevant randomized research studies. After evaluating the studies for quality the results are combined ("meta-analysis"). The results can be used to offer readers our best understanding of the effectiveness of a particular treatment. The Reviews are updated on a regular basis as new information becomes available.

---

## Evidence-based Practice Guidelines

#getIRStat("ebp", true)# evidence-based guidelines from various sources, including the National Guideline Clearinghouse, with links to the complete online guideline when available

**Purpose:** To aid in the total management of patients with specific conditions like congestive heart failure, otitis media, and others - they often include recommendations for screening, diagnostic approaches, therapeutic interventions, and for monitoring patients

**Example of use:** Practice guidelines answer the following questions: What medical care should be provided for most patients most of the time? What medical care is not effective and should not be used for most patients?

**Detailed Description:** Each guideline includes the source, the date of the latest update, and a summary of the major recommendations. Each guideline provides a rating of the strength of the recommendations and links to more detailed information, algorithms, and other pertinent online resources.

---

## Number Needed To Treat (NNT)

A statistic that conveys how many patients need to be treated with one intervention, instead of another, for one additional patient to receive benefit

**Purpose:** To help compare the likelihood of benefit (or harm) among several potential therapeutic options, since most interventions don't benefit (or harm) 100% of the patients treated

**Example of use:** In the treatment of class I or II heart failure, treatment of 100 patients with an ACE inhibitor will prevent one additional death. In more severe disease (class IV), only six patients require treatment for an additional death to be prevented.

**Detailed Description:** The NNT gives us a better understanding of the relative benefit of treatment as compared with other statistics such as relative risk reduction. By knowing the NNT, clinicians and patients can determine whether a particular treatment is "worth it."

---

## Patient Education Handouts (Web Only)

A collection of more than 560 patient education handouts published by the American Academy of Family Physicians

**Purpose:** To provide an easy to read, clearly understood, overview of common primary care illnesses and diseases, suitable for providing to patients

---

## Derm Expert

A tool designed to help clinicians diagnose dermatological conditions, containing more hundreds of images, browsable by morphology and disease.

---

## Understanding the diagnostic calculators

The following are descriptions of the terms used in the Diagnostic and H&P test calculators.

**Pretest:** Best estimate of percent with disease before any testing

**Sensitivity:** Percent with disease who have a positive test

**Specificity:** Percent without disease who have a negative test

**LR:** Likelihood ratio for each level of test. The higher it is, the better it rules in disease. The lower it is, the better it rules it out.

**LR+:** Positive likelihood ratio (how well a positive test rules-in disease)

**LR-:** Negative likelihood ratio (how well a negative test rules-out disease)

**LR = 1:** No change in disease likelihood

**Prob:** Probability of disease for patients with this test result